

# Sample submission guide for PCR analysis using FTA cards

**FTA cards are a simple tool to send samples for PCR diagnostic to our laboratory.** They contain chemicals that lyse cells, denature proteins and protect nucleic acids. You can ship your samples to the laboratory without expensive special handling or cooling. They are especially suited for sending samples if isolation of the pathogen is not required.

**Our full spectrum of pathogen PCRs can be applied by using FTA cards.**



**Please follow our recommendations for using FTA cards:**

## 1 General recommendations:

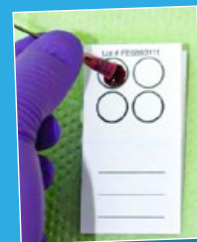
Before using the FTA cards store them in a dry and dark place. To avoid contamination find a place for storage with no contact with animals or things that could content parts of viruses or bacteria (e.g. vaccines).

Always use gloves when handling the cards. Only tip or spot the samples on the card.



## 2 Blood samples for PCR analysis:

Apply one drop whole blood per field



## 3 Swabs:

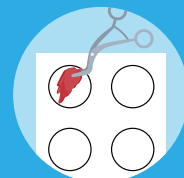
It is very important to have enough liquid on the swab. Otherwise no material will be transferred to the card.

Press and roll the swab on the surface of the card, do not rub.



## 4 Tissue/Organ samples:

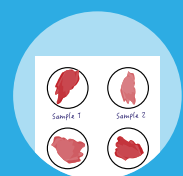
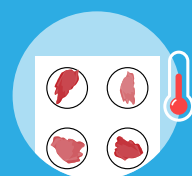
Cut the tissue and press the cutting surface carefully on the FTA card.



## 5 Sending samples:

After applying the samples to the card let them dry at room temperature (avoid direct light and heat). Label each card with the name of the sample (e.g. flock or herd number).

Write down the pathogens you want us to look for separately and send everything in an envelope to us.



PDF